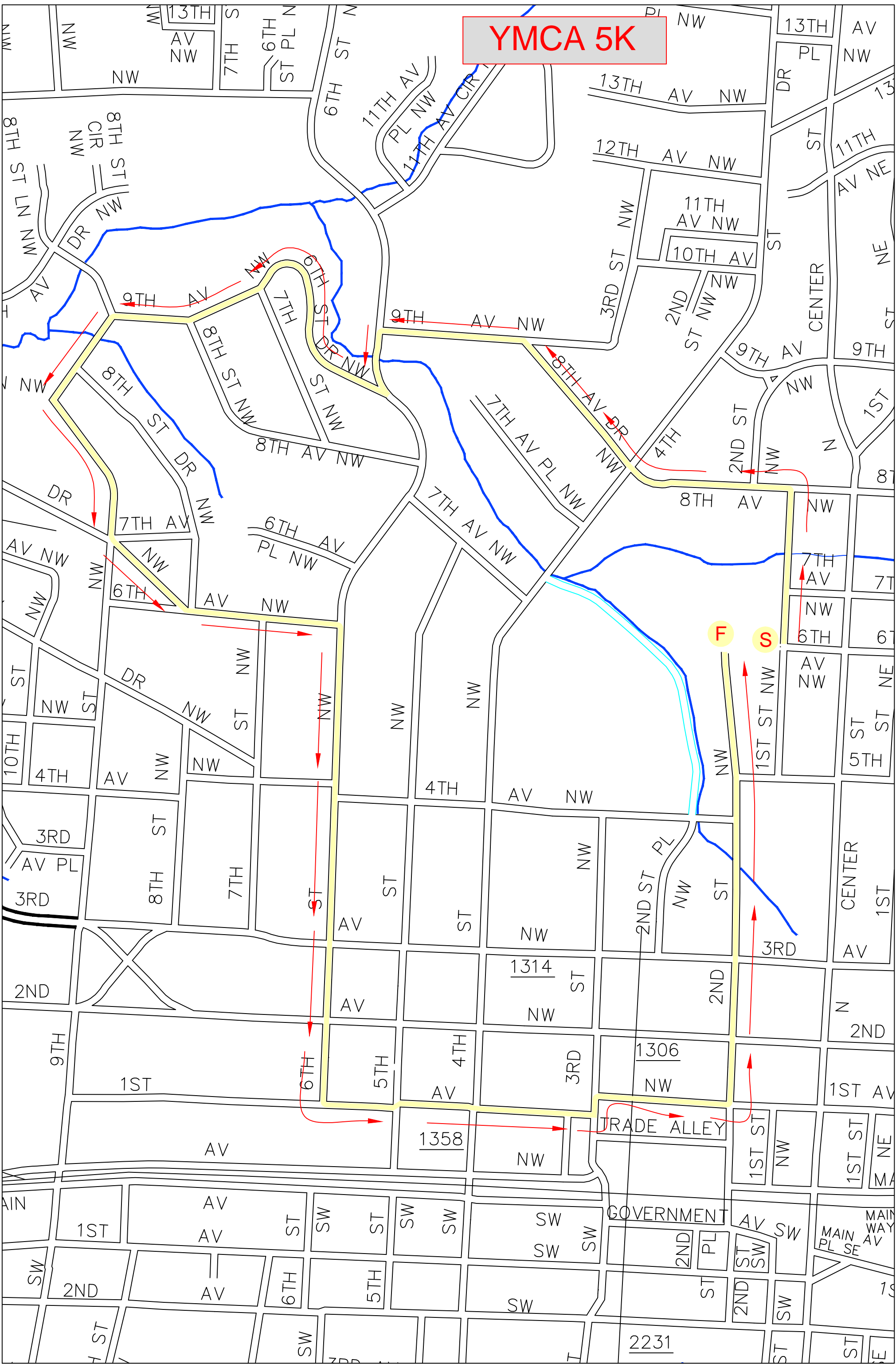
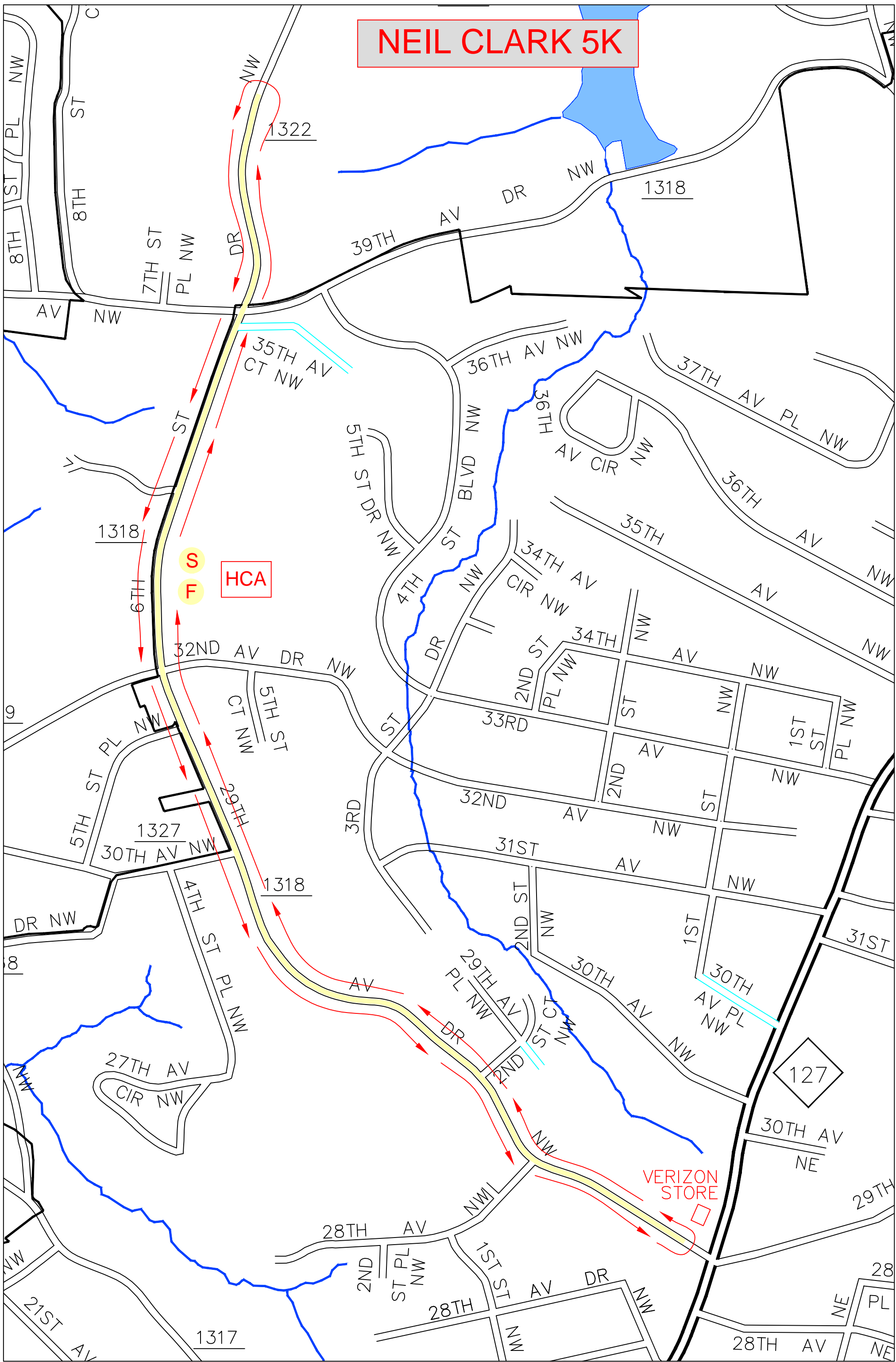


# YMCA 5K





# NEIL CLARK 5K



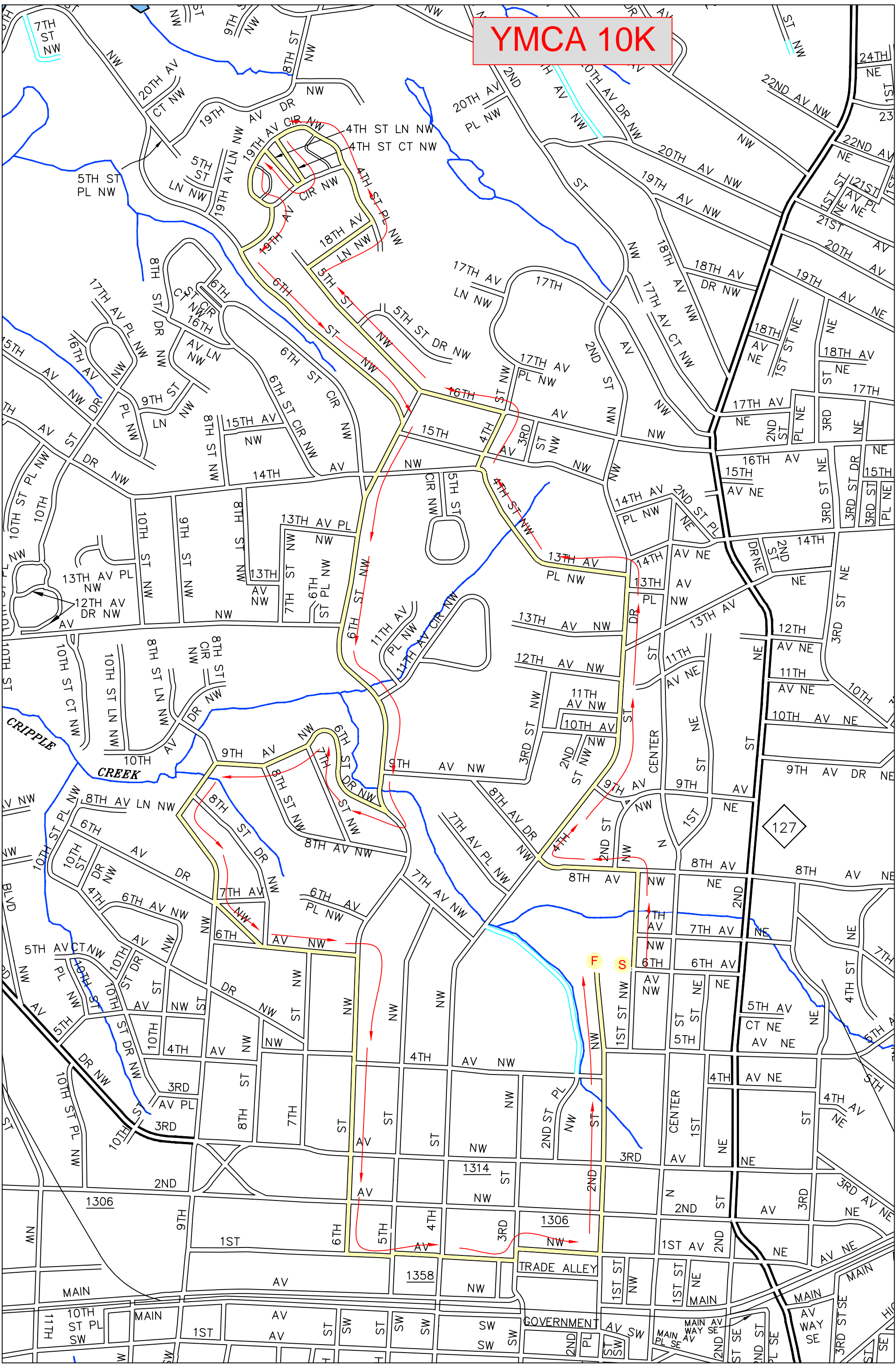
# Winkler Park 5K



PUBLIC ACCESS (BOTH PEDESTRIAN & VEHICULAR) TO THE PLAYGROUND, PICNIC SHELTER AND ACTIVITY CENTER AT WINKLER PARK MUST REMAIN OPEN AT ALL TIMES DURING THE EVENT.

PUBLIC ACCESS (BOTH PEDESTRIAN & VEHICULAR) TO THE PLAYGROUND, PICNIC SHELTER AND ACTIVITY CENTER AT WINKLER PARK MUST REMAIN OPEN AT ALL TIMES DURING THE EVENT.

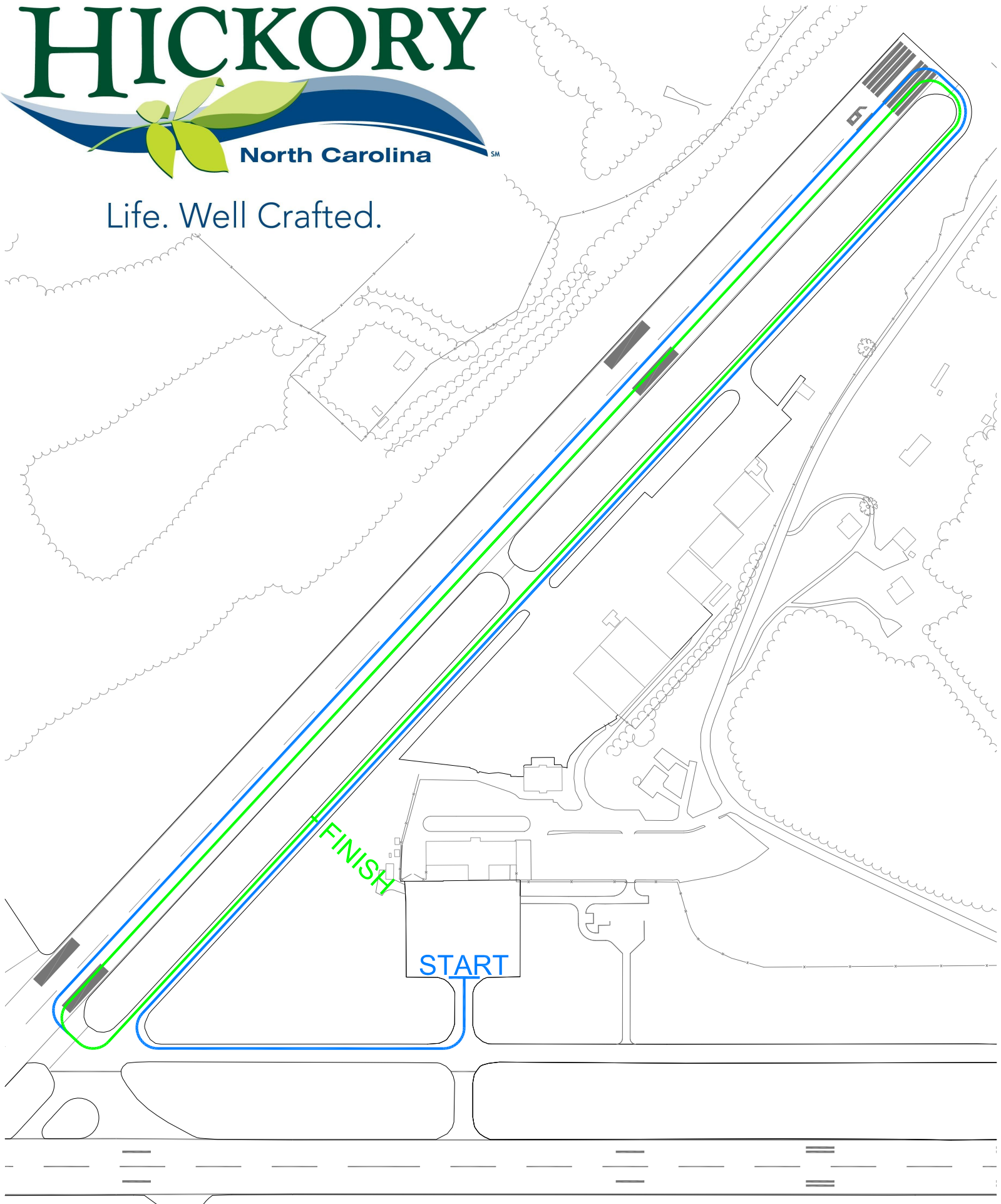
# YMCA 10K



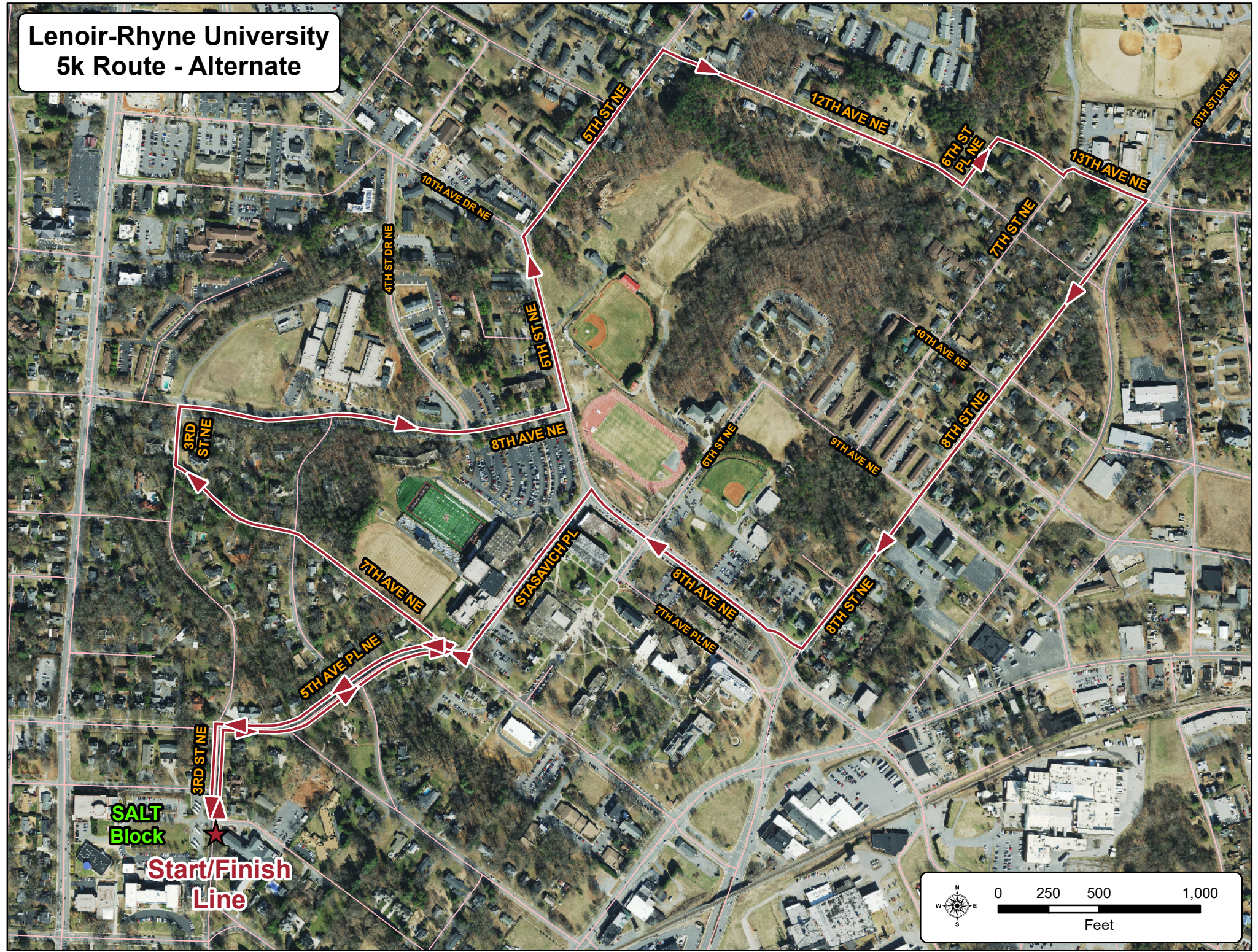
# HICKORY

North Carolina

Life. Well Crafted.



# Lenoir-Rhyne University 5k Route - Alternate



SALT  
Block

Start/Finish  
Line



